

Roller Blind Fitting Instructions

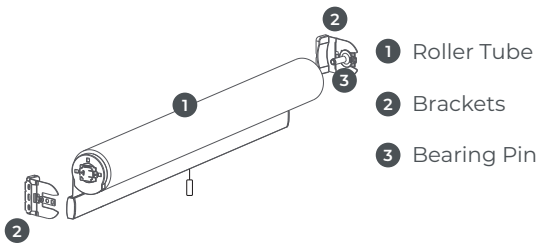
Classic Headrail - Spring Control

BLINDS CHILD SAFETY AWARENESS



Keep all cords and chains out of the reach of children. Loose cords or chains should never be tied together.

Parts Identified



- 1 Roller Tube
- 2 Brackets
- 3 Bearing Pin

DO NOT REMOVE THE RED TRANSPORT CLIP BEFORE STEP 3. YOUR BLIND WILL LOSE ITS TENSION.

Additional Parts



Screws*



Brackets

Tools Required



Pencil



Screwdriver



Drill

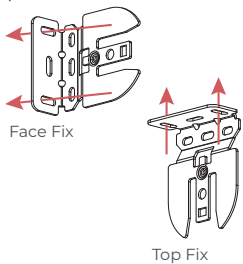


Tape Measure

Fitting Instructions

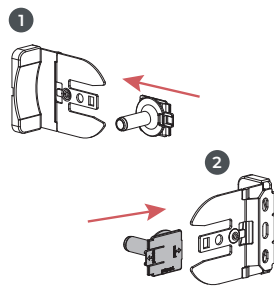
1. Fix Brackets

Measure the width of your blind. Mark this distance where you wish to fit your blind. Line up the outside of the brackets with these marks and mark where the screws will go. Drill the holes and fit the brackets. Face fix or top fix option.



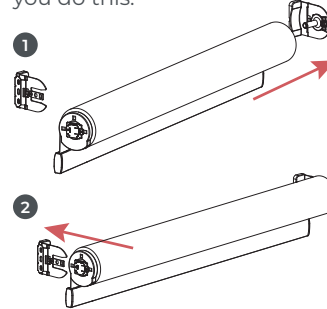
2. Attach Bearing Pin

Slide bearing pin onto the right hand bracket until it clicks in place.



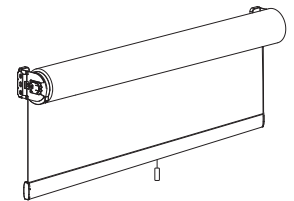
3. Slide and Click

Slide roller tube onto bearing pin then slide left hand side onto the bracket. The red transport clip will come off as you do this.



4. Operating your Blind

Gently pull cord down. To lift blind up pull downwards and release the pressure whilst holding the cord. You can stop the blind at a desired height by pulling slightly downwards.

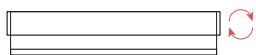


Adjusting the Spring

The spring will come pre-tensioned but you can adjust the height of your blind once it is fitted.

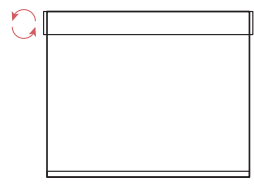
1. Set Top Height

To set the top height of the blind lower, rotate the right wheel away from you. To set the top height higher, rotate the right wheel towards you.



2. Adjust Bottom

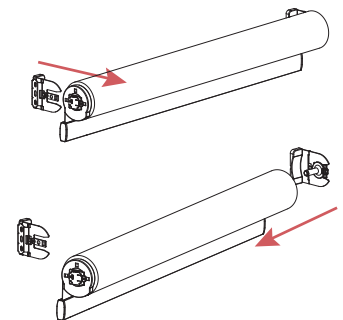
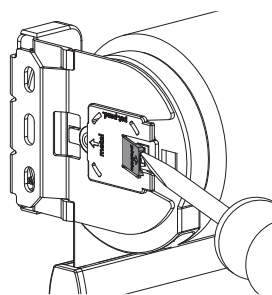
Pull the blind down to its full extent. Rotate the left wheel towards you to make the blind longer and away from you to make it shorter.



Removing the Blind

Unclip from Brackets

Use a flat head screwdriver to release the left hand side of the blind. Slide this end off the bracket and then gently slide off the bearing pin.



Cleaning Instructions

Use a dry lint free cloth to wipe over the fabric of the blind. No cords or chains make this system completely child safe. The pull cord will never be longer than 200mm.

*Before you start fitting your blind make sure the screws are suitable for the surface you are fitting into. Some surfaces will require wall plugs and different screws to the ones we provide.